

***Onetouch Technologies Co., Ltd.***

***Onetouch***<sup>®</sup>

**Specification of Control Board**

**Model : 4W232-7**

| <b>Onetouch Technologies Co., Ltd 益震科技股份有限公司</b> |                             |                        |                            |
|--|-----------------------------|------------------------|----------------------------|
| <b><i>Model No.</i></b>                          | <b><i>Released Date</i></b> | <b><i>Rev.</i></b>     | <b><i>Page</i></b>         |
| 4W232-7  |                             | A1                     | 1 / 7                      |
| <b><i>Approval</i></b>                           | <b><i>Checked</i></b>       | <b><i>Reported</i></b> | <b><i>R&amp;D Dep.</i></b> |
|  |                             |                        |                            |

## 1. Application

This specification applies to the following **Analog Serial Control Board for Four Wire Resistive Controller**.

Serial Control Board MODEL: 4W232-7

## 2. Mechanical Characteristics

|                     |  |
|---------------------|--|
| Dimension           | PCB board 70 x 25 x 16mm<br>Refer to Appendix D  |
| Contact RS-232 port | Control Box 95 x 62 x 20mm<br>9 PIN connector on board for connect with RS-232 port<br>Refer to Appendix A |
| Contact panel port  | 5 PIN connector on board for connect with touch panel<br>Refer to Appendix B                               |

## 3. Environmental conditions

|                             |                            |
|-----------------------------|----------------------------|
| Operating temperature range | -10°C ~ 60°C               |
| Operating humidity range    | 5% ~ 96% RH (No dew falls) |
| Storage temperature range   | -40°C ~80°C                |
| Storage humidity range      | 5% ~ 96% RH (No dew falls) |

## 4. Electrical characteristics

|                   |   |
|-------------------|---|
| Power requirement | 5V DC                                       |
| Data rate         | 9600 Baud                                   |
| Data input        | RS-232                                      |
| Expend power      | 124 MA                                      |
| Power consumption | Max. current : 140mA<br>Min. current : 90m/ |
| Artwork           | Appendix C                                  |

## 5. Software Driver

Under Windows: Mouse emulation

Support Windows NT4.0/XP/2000/ME/98/95/3.1, DOS

Linux Redhat 7.3, 8.0, 9.0 Mandrake 8.0,9.0,9.1

Onetouch Technologies Co., Ltd 益震科技股份有限公司

| <i>Model No.</i> | <i>Released Date</i> | <i>Rev.</i>     | <i>Page</i>         |
|------------------|----------------------|-----------------|---------------------|
| 4W232-7          |                      | A1              | 2 / 7               |
| <i>Approval</i>  | <i>Checked</i>       | <i>Reported</i> | <i>R&amp;D Dep.</i> |
|                  |                      |                 |                     |

## 6.

The following characteristics are evaluated test sample after 2 hours leaving in the room condition when each of the reliability tests has finished.

| Test Item                | Result                                  | Remark              |
|--------------------------|---|---------------------|
| Storage Temperature-high | 80°C for 240hours                       | At Ambient humidity |
| Storage Temperature-low  | -40°C for 240hours                      |                     |
| Thermal Shock            | -10°C (1 hr.)~ 60°C (1 hr.)<br>10cycles |                     |
| High Temp./Humidity test | 60°C/95% RH : 240hours                  |                     |

## 7. Optical Performance

Inspect I.C. parts depending on BOM list by naked eyes.

## 8. Function Test

Function test : 100% tested by INTCTEST.EXE testing program.

## 9. A Discussion Item

The problem which is not provided in this specification, or an unidentified issue decided by the discussion.

**Onetouch Technologies Co., Ltd** 益震科技股份有限公司

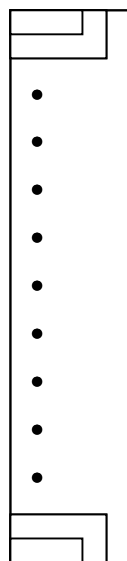
| <i>Model No.</i> | <i>Released Date</i> | <i>Rev.</i>     | <i>Page</i>         |
|------------------|----------------------|-----------------|---------------------|
| 4W232-7          |                      | A1              | 3 / 7               |
| <i>Approval</i>  | <i>Checked</i>       | <i>Reported</i> | <i>R&amp;D Dep.</i> |
|                  |                      |                 |                     |

**Appendix A : Control board contact RS-232 port**

Control board ----- RS-232 port

|      |   |       |     |
|------|---|-------|-----|
| CTS  | 1 | _____ | 7   |
| RXD  | 2 | _____ | 2   |
| TXD  | 3 | _____ | 3   |
| VCC  | 4 | _____ | 4   |
| GND  | 5 | _____ | 5   |
| DSR  | 6 | _____ | 6   |
| DCD  | 7 | _____ | 1   |
| CGND | 8 | _____ | N/C |
| VCC  | 9 | _____ | N/C |

J1



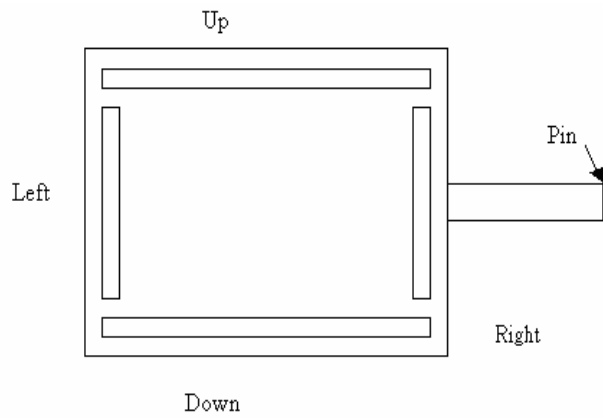
Contact RS-232 port

| <b>Onetouch Technologies Co., Ltd 益震科技股份有限公司</b> |                      |                 |                     |
|--|----------------------|-----------------|---------------------|
| <i>Model No.</i>                                 | <i>Released Date</i> | <i>Rev.</i>     | <i>Page</i>         |
| 4W232-7  |                      | A1              | 4 / 7               |
| <i>Approval</i>                                  | <i>Checked</i>       | <i>Reported</i> | <i>R&amp;D Dep.</i> |
|  |                      |                 |                     |

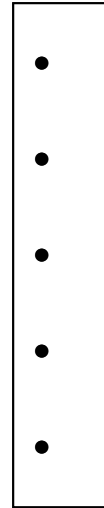
**Appendix B : Control board contact panel por**

Onetouch 4W Panel Pin-----J3 ConnectorCable

|            |   |
|------------|---|
| Up - 1     | 1 |
| Right -- 2 | 2 |
| Left -- 3  | 5 |
| Down -- 4  | 4 |



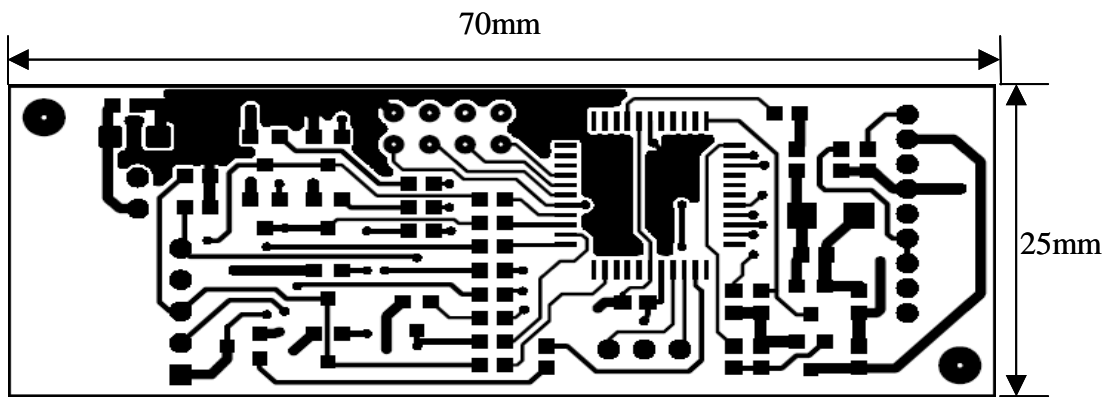
J3



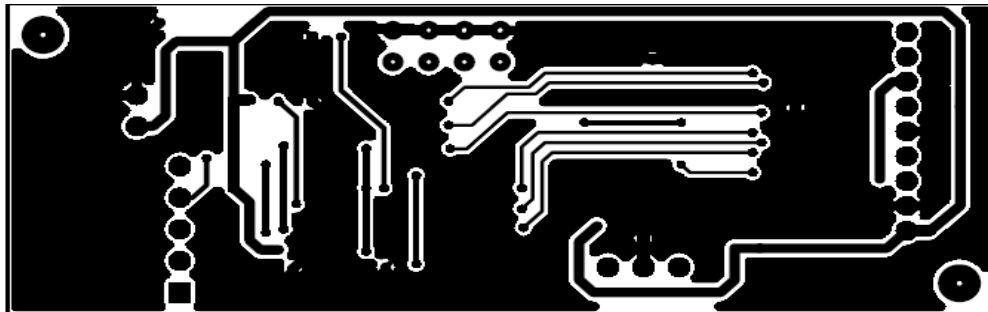
Contact panel port

| <b>Onetouch Technologies Co., Ltd 益震科技股份有限公司</b> |                      |                 |                     |
|--|----------------------|-----------------|---------------------|
| <i>Model No.</i>                                 | <i>Released Date</i> | <i>Rev.</i>     | <i>Page</i>         |
| 4W232-7  |                      | A1              | 5 / 7               |
| <i>Approval</i>                                  | <i>Checked</i>       | <i>Reported</i> | <i>R&amp;D Dep.</i> |
|  |                      |                 |                     |

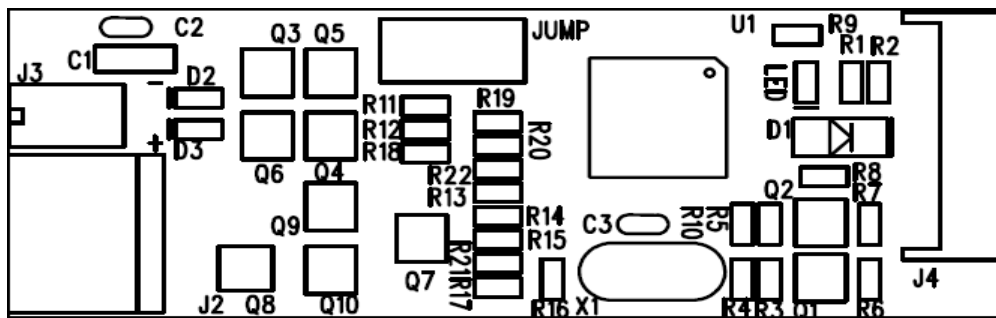
**Appendix C : Artworl**



ARTWORK BOTTOM LAYER



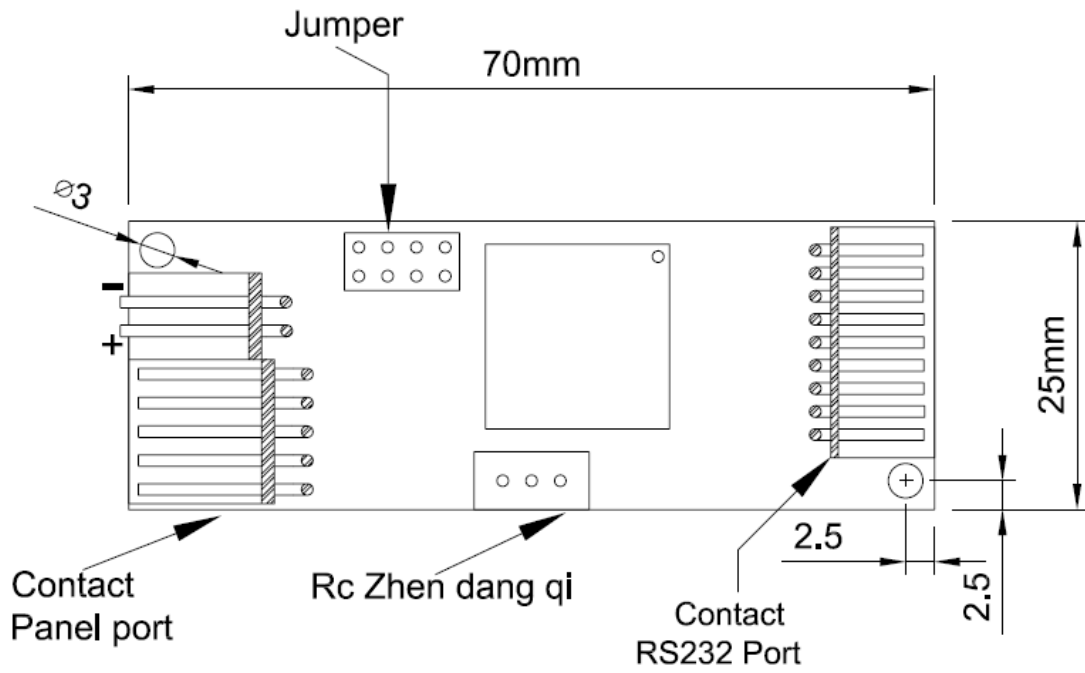
ARTWORK TOP LAYER



SILKSCREEN TOP SIDE

| Onetouch Technologies Co., Ltd 益震科技股份有限公司 |                      |                 |                     |
|---|----------------------|-----------------|---------------------|
| <i>Model No.</i>                          | <i>Released Date</i> | <i>Rev.</i>     | <i>Page</i>         |
| 4W232-7                                   |                      | A1              | 6 / 7               |
| <i>Approval</i>                           | <i>Checked</i>       | <i>Reported</i> | <i>R&amp;D Dep.</i> |
|   |                      |                 |                     |

**Appendix D : Dimension**



ALL DIMENSIONS ARE IN MILLMETERS

| Onetouch Technologies Co., Ltd 益震科技股份有限公司 |                      |                 |                     |
|---|----------------------|-----------------|---------------------|
| <i>Model No.</i>                          | <i>Released Date</i> | <i>Rev.</i>     | <i>Page</i>         |
| 4W232-7                                   |                      | A1              | 7 / 7               |
| <i>Approval</i>                           | <i>Checked</i>       | <i>Reported</i> | <i>R&amp;D Dep.</i> |
|   |                      |                 |                     |