

Specification of Resistive Controller Board & User Manual

Customer :

Model : Onetouch-RC-3100

Date :

Version:

Acceptance Sheet			
Onetouch Technologies Co., Ltd.			
(Supplier)		(Purchaser)	
Date	Approval Signature	Date	Approval Signature

Note !!

Please avoid using it on the products correlated with the human life. (For example: Medical apparatus, universe apparatus, plane, seafloor relay apparatus, etc. needs high trusting thing)

If consider applying to the control of transporting apparatus (train, automobile, boat) or as correlated security, please tell to seller in advance. The quality of this product is used in general products mainly (Computer, OA machine, FA machine, communication apparatus, measurement apparatus, AV machine, etc.)

* The copyright of this specifications is in Onetouch Technologies Co., Ltd..

All reprint and the reproduction of without permission are prohibited.

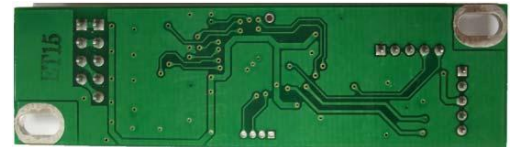
* The content of this specifications might change without a previous notice.

Onetouch Resistive Controller Board

Setup and Users Manual

Hardware Specifications

Power	+5VDC (+4.75 to +5.25 VDC)
Requirements	
Operating Temperature	0 ~ 70°C
Storage Temperature	-40 ~ 85°C
Temperature Relative Humidity	10% to 90% RH
Protocol	HID-USB Model : USB 2.0 Full speed, RS232 Model : 9600 bauds, None parity, 8 data bits, 1 stop bit
Resolution	4096 x 4096
Accuracy	Max. +/- 0.5% tolerance
Tolerance	
Report Rate	RS232: Max. 160 points/sec USB: Max. 250 points/sec
Response Time	Max. 20 ms Auto Detector
Pin Out Definition	4 wire model (X+ , Y+ , X- , Y-) (X+ , X- , Y+ , Y-) (X+ , Y+ , Y- , X-) 5 wire model (UL , UR , COM , LL , LR) ELO type (UL , UR , COM , LR , LL) 3M type
Panel Resistance	50 ~ 200 ohm (pin to pin on the same layer, touch resistance under 3.5k ohm)
PC link	When both USB & RS232 cables connected to PC at the same time, only USB will enable



Software Feature

Calibration	Fast full oriental 4 points position
Compensation	Edge compensation, Accuracy 25 points linearity compensation
Draw Test Controller	Position and linearity verification Support multiple controllers, Dynamical add/ remove controllers Change controller interface without reboot
Languages	Support 4 languages for Windows
Mouse Emulator	Right / left button emulation. Auto Right / left Click
Touch Style	Support Drawing a Mode · Support button a Mode · Touch Off/ on Switch
Double Click	Configurable double click speed · Configurable double click area
Sound	No sound
COM Port Support	COM1 ~ COM255 for Windows and Linux, Support COM1~ COM8 for DOS
Display Support	Support monitor/ display rotation Support multiple monitors Support split monitor
OS Support	All Windows-32 bit O.S VISTA ; XP-64 bit O. MS-DOS All Linux QNX

